

IPEPA Animation project

The IPEPA Animation project is a series of educational films designed specifically for our deadly mob, featuring our hero Sean, embarking on ten journeys of palliative care understanding. Although all the stories have the same objective, to bring out into the open the subject of death, dying and palliative care, each is unique and discusses a different aspect of what happens when people 'walkabout to the other side'.

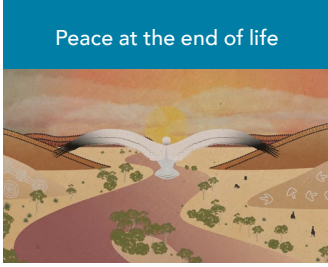
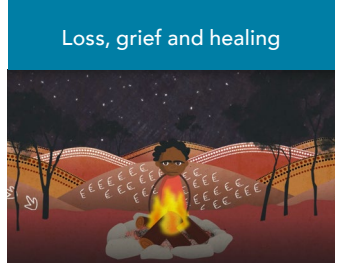
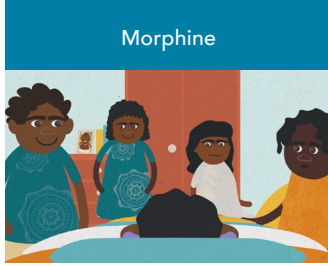
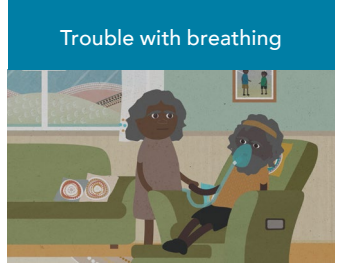
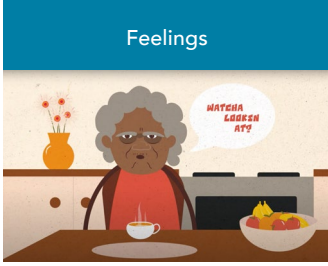
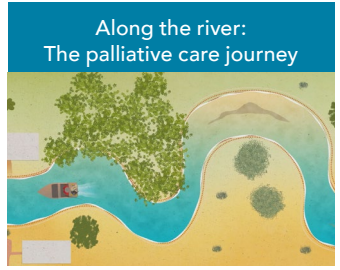
The videos draw on Aboriginal and Torres Strait Islander cultural strengths and perspectives to educate and entertain communities and health professionals about palliative care themes in a grass-roots way. The series features the voice and animated version of the multi-talented comedian Sean Choolburra.



For more information about the IPEPA project, please visit the PEPA website: <https://pepaeducation.com/about-ipepa/>

Awarded Best Instructional Training Video or Website, 2022
by the Australian Teachers of Media (ATOM)





Scan the QR code to view the videos on the IPEPA YouTube channel



IPEPA animation scripts were developed by Aboriginal and Torres Strait Islander communities, palliative care workers and health professionals with experience in a range of health care settings.

Storyboarding occurred with an artist in narm (Melbourne), Sean recorded his voice in tarntnya (Adelaide) and meanjin (Brisbane) and animation and post-production was completed in meanjin (Brisbane).

